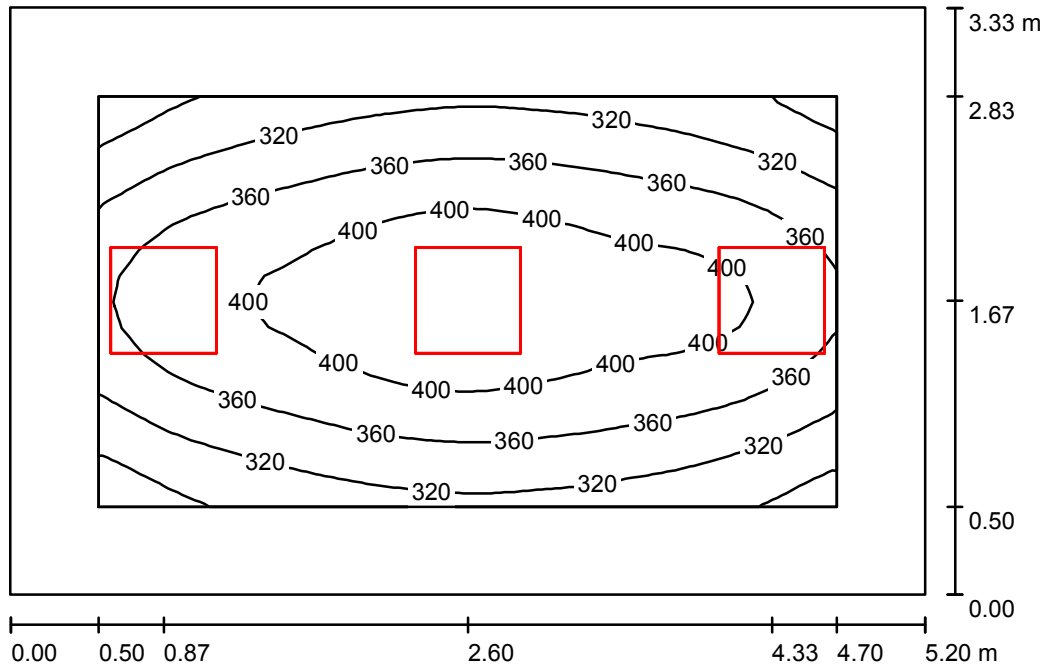


Operator  
Telephone  
Fax  
e-Mail

## 1.02, 2.02 3.02 / Summary



Height of Room: 3.000 m, Mounting Height: 3.000 m, Maintenance factor: 0.90

Values in Lux, Scale 1:43

Surface	$\rho$ [%]	$E_{av}$ [lx]	$E_{min}$ [lx]	$E_{max}$ [lx]	$u_0$
Workplane	/	361	254	442	0.702
Floor	20	249	165	320	0.662
Ceiling	70	74	49	107	0.661
Walls (4)	50	170	59	451	/

### Workplane:

Height: 0.800 m  
Grid: 32 x 16 Points  
Boundary Zone: 0.500 m

Illuminance Quotient (according to LG7): Walls / Working Plane: 0.495, Ceiling / Working Plane: 0.206.  
Proportion of points with less than 400 lx (for IEQ-7): 76.95%.

### Luminaire Parts List

No.	Pieces	Designation (Correction Factor)	$\Phi$ (Luminaire) [lm]	$\Phi$ (Lamps) [lm]	P [W]
1	3	OCTA-LIGHT PLC OCTL-OLS-30-RNWR (1.000)	3040	3100	28.0
Total:			9120	9300	84.0

Specific connected load:  $4.85 \text{ W/m}^2 = 1.34 \text{ W/m}^2/100 \text{ lx}$  (Ground area:  $17.32 \text{ m}^2$ )